

Installation Notes for Prolific PL-2303 USB Driver for USB - RS232 Adaptor Cable

1. Uninstall Existing USB-Serial Adaptor Drivers

Uninstall any existing USB-RS232 drivers before installing the PL2303 driver. Plug your adaptor cable into the appropriate USB port. Navigate to your Device Manager, and open the Ports list:

Windows XP

The path is: Start ⇒ Control Panel ⇒ System (you might need to set your Control Panel to 'Classic View') ⇒ Hardware ⇒ Device Manager ⇒ Ports (COM & LPT).

Vista and Windows 7

The path is: Start ⇒ Control Panel ⇒ Device Manager (you might need to set your Control Panel to 'Classic View') ⇒ Ports (COM & LPT)

Once you have opened your Ports list, highlight the driver you want to uninstall, right-click and select 'Properties'.

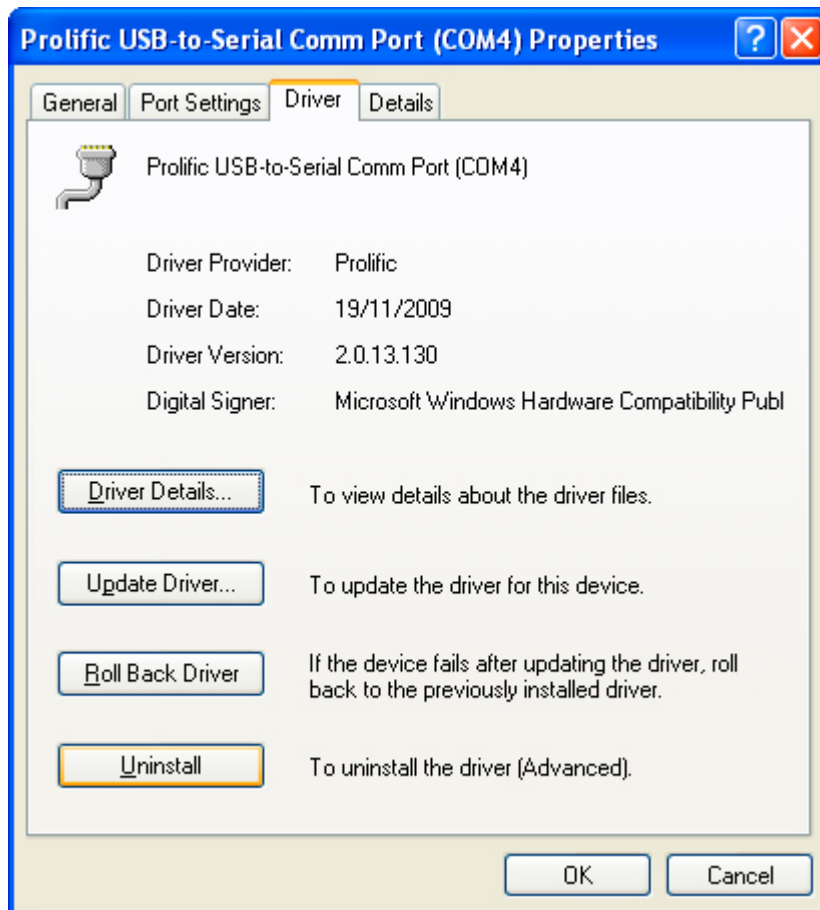


Fig. 1. Open the 'Driver' tab and select 'Uninstall'. Follow the prompts to complete uninstallation of your existing driver.

Disconnect your adaptor cable. Do not reconnect your cable until directed to do so in section 4.

2. Locate the PL2303 USB Driver Installer

2.1. Install from Software Disk

- Place your Software CD in the Disk Drive on your computer.
- Navigate to the Disk Drive using My Computer.
- Highlight the drive, right-click and select 'Explore'.
- Highlight the 'USB Driver' folder, right-click and select 'Explore'

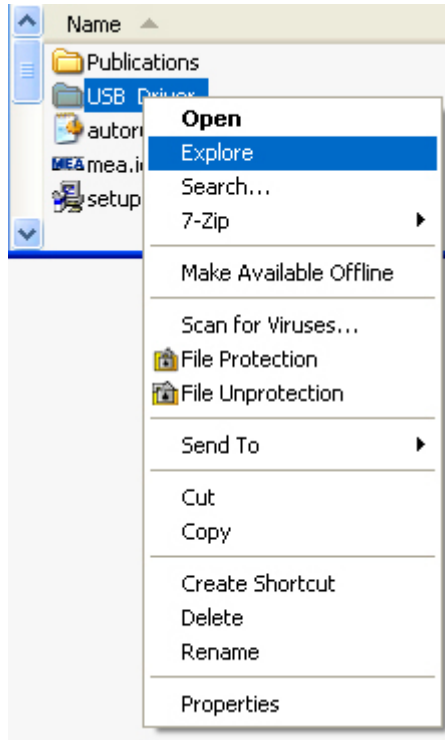


Fig. 2. Open the 'USB Driver' folder to find the file 'PL2303_Prolific_DriverInstaller_v1210.exe'



Fig. 3. Highlight the file and double left-click to start the installation.

2.2. Install from MEA Website

- Open your web browser and go to www.mea.com.au <http://www.mea.com.au/downloads/magpie#usbdriver>
- Click on the 'Prolific PL2303 USB to RS232 Adapter Driver' link.

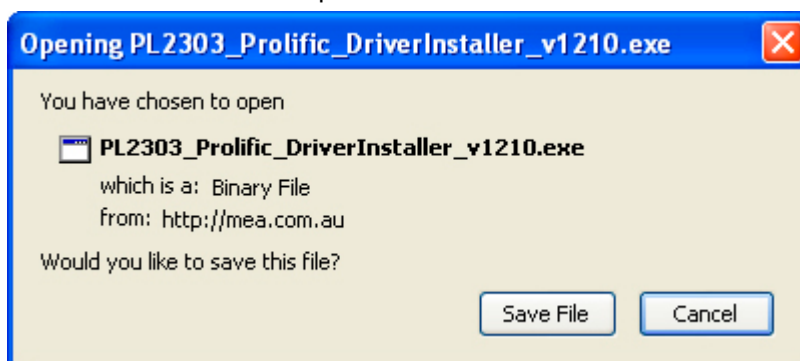


Fig. 4. Depending on your Web Browser and preferences, you may see a screen like this. Choose 'Save File' to begin downloading. If given the option to 'Run', choose 'Run'.

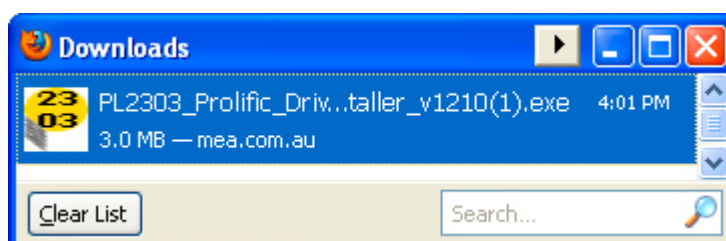


Fig. 5. If you saved the file, navigate to your save location and select the file 'PL2303_Prolific_DriverInstaller_v1210.exe' from the list and double left-click.



Fig. 6. Choose to 'Run' the file.

3. Run the InstallShield Wizard

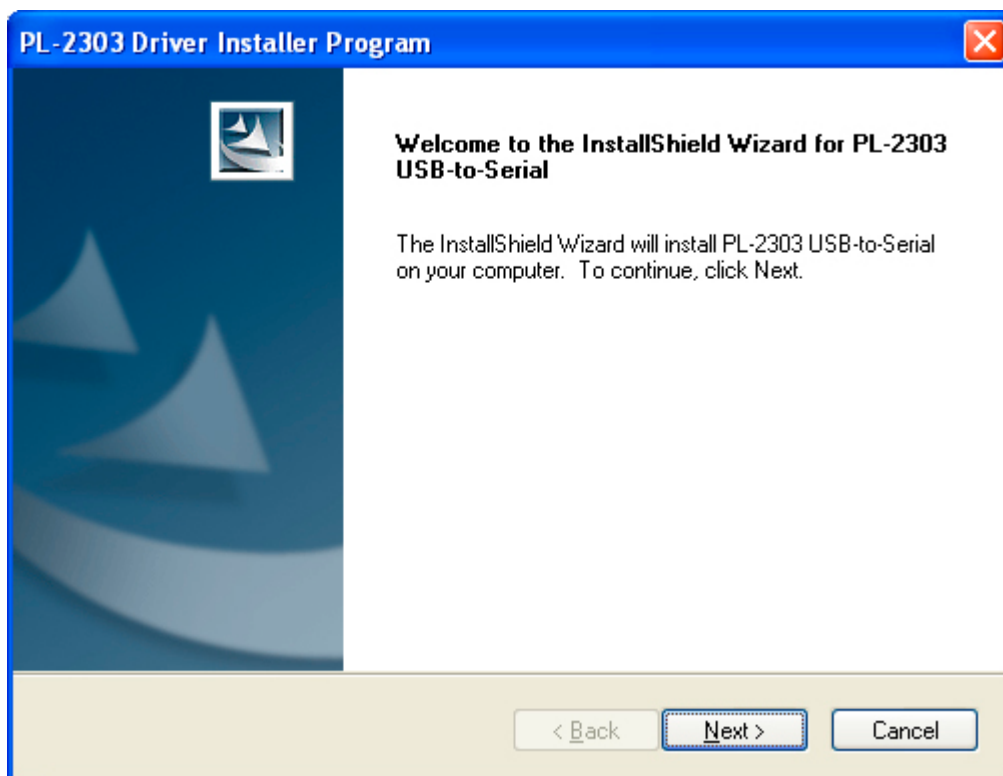


Fig. 7. Choose 'Next' to run the InstallShield Wizard.

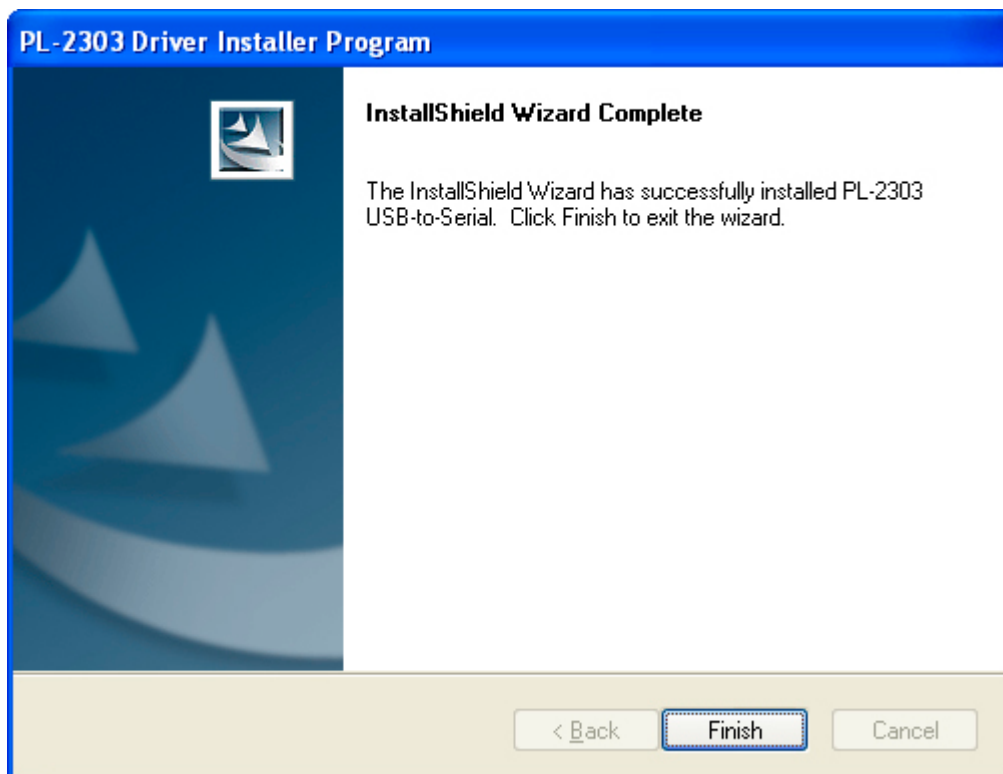


Fig. 8. Choose 'Finish' to close the InstallShield Wizard.

4. Plug the Cable Into a USB Port

Do not use a USB hub.



Fig. 9. The 'Found New Hardware' notice will display in the system tray.

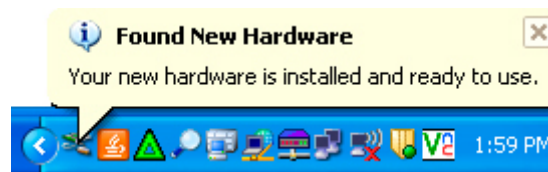


Fig. 10. The USB driver has been assigned a Com port.

5. Find Out Which Communications Port the Operating System Has Assigned to the USB Driver

Windows XP

The path is:

Start ⇒ Control Panel ⇒ System (you might need to set your Control Panel to 'Classic View') ⇒ Hardware ⇒ Device Manager ⇒ Ports (COM & LPT)

Vista and Windows 7

The path is:

Start ⇒ Control Panel ⇒ Device Manager (you might need to set your Control Panel to 'Classic View') ⇒ Ports (COM & LPT)

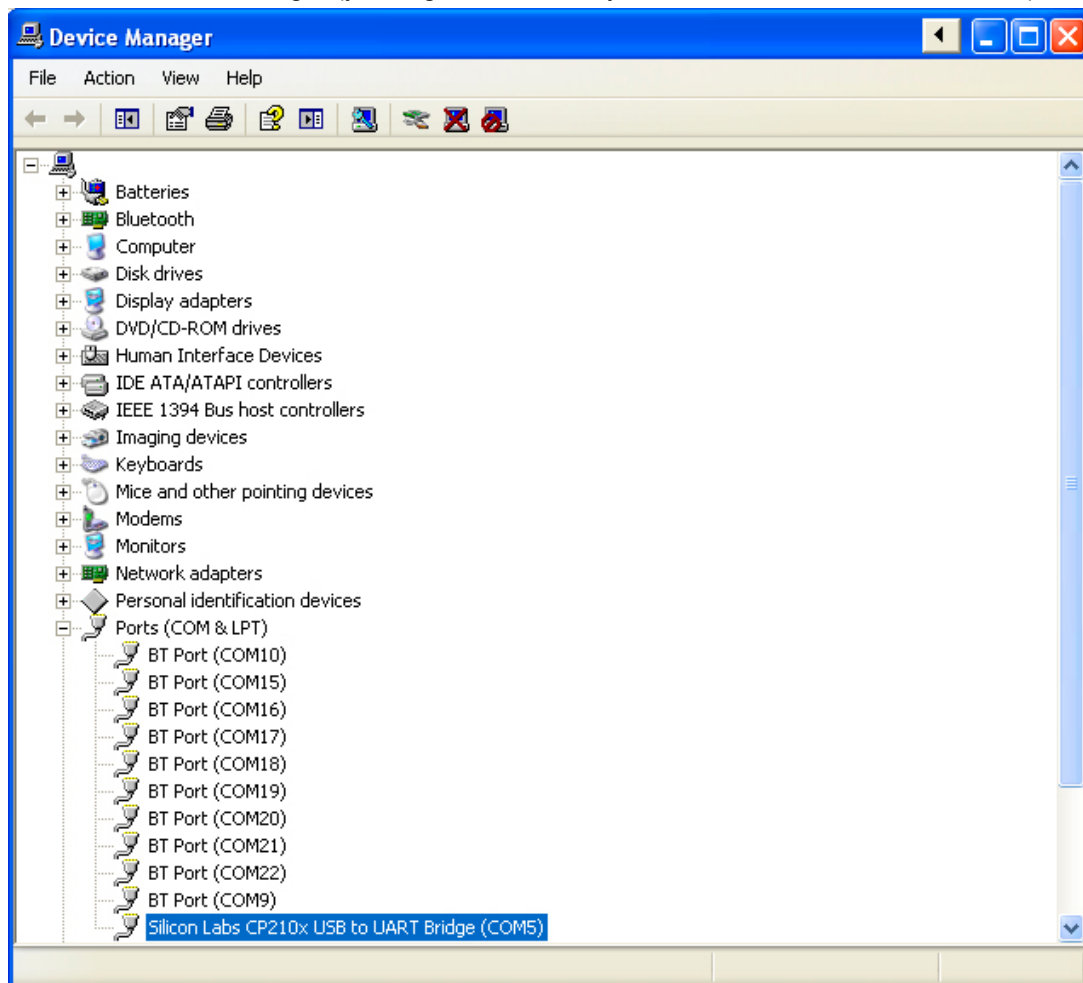


Fig. 11. The newly installed USB drivers will appear on the Ports list as above.

If you are happy with the port number assigned to your USB driver, proceed to step 6. *Set the Port Number in Your Software.* If you want to change the port number assigned to your USB driver, proceed to step 5.1 *Change the USB Driver Port Number in Device Manager.*

5.1. Change the USB Driver Port Number in Device Manager

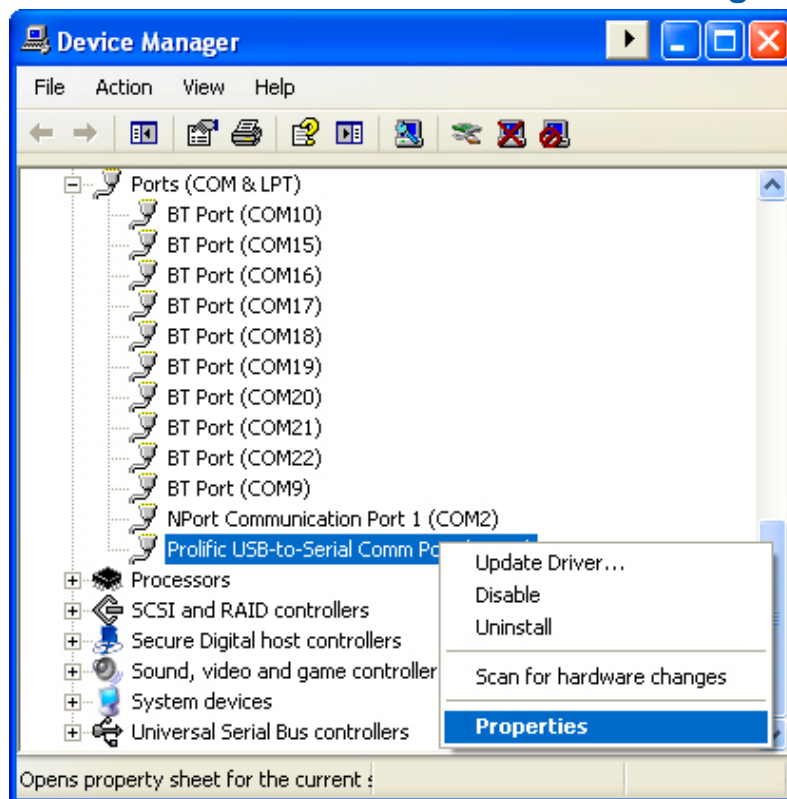


Fig. 12. Right-click the USB driver on the Ports list and select 'Properties'.

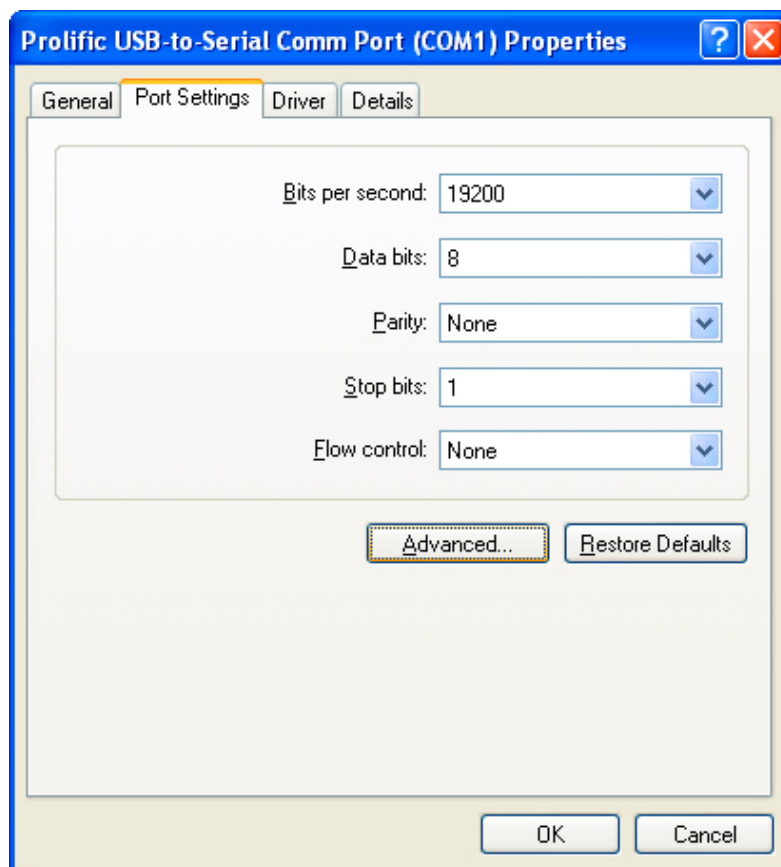


Fig. 13. Open the 'Port Settings' tab and select 'Advanced'.

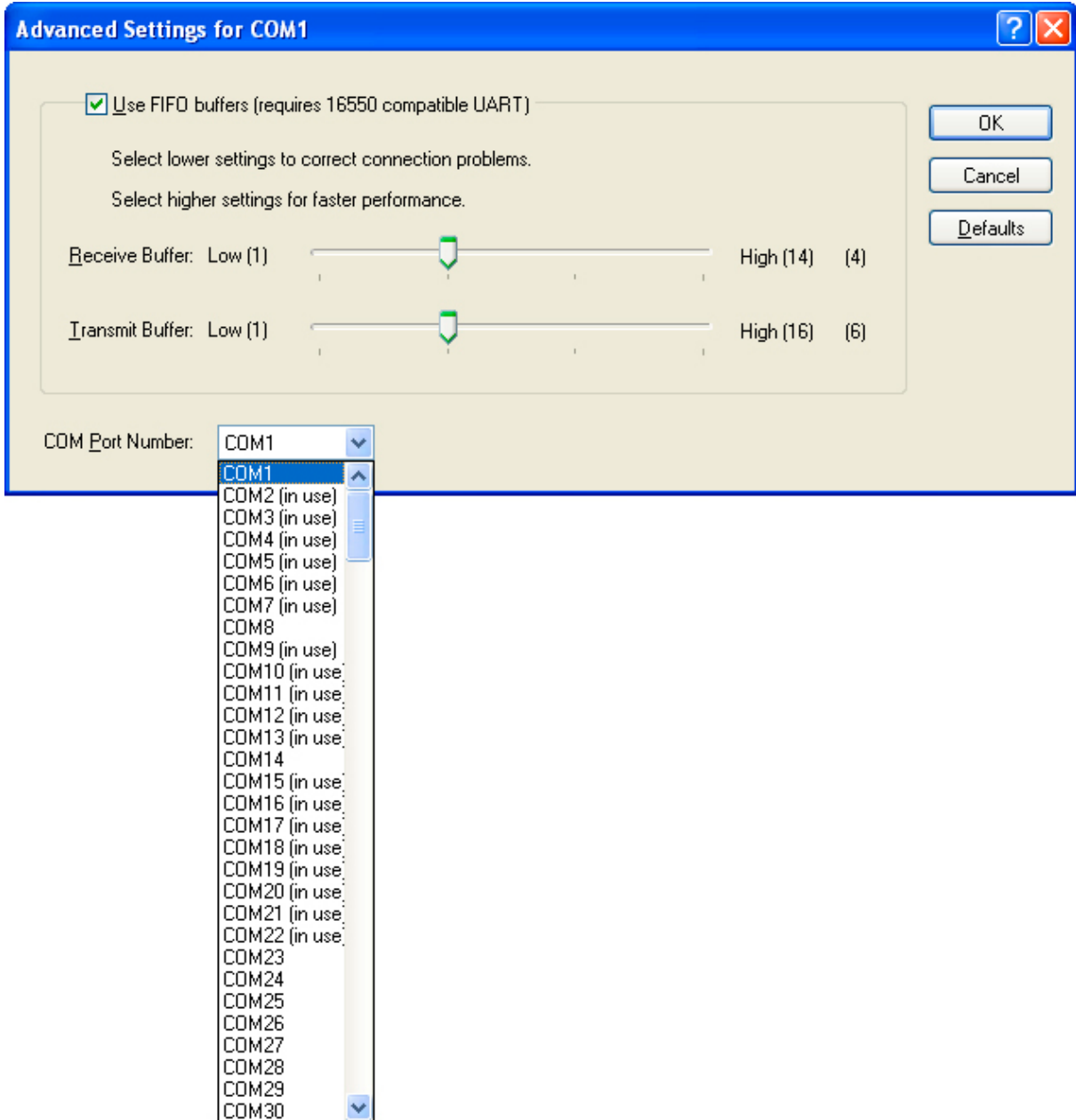


Fig. 14. In the 'Advanced Settings' window, activate the drop-down for 'COM Port Number'. You will be presented with a list of ports. Click on an unused port to change the COM port for your USB driver. Click 'OK' to close the 'Advanced Settings', then the 'Properties Windows'. Close the 'Device Manager' window then re-open it. Your USB driver should now be assigned to the new port.

6. Set the Port Number in Your Software

Open the software you are attempting to communicate with. Refer to your software manual for the procedure to set the communications port. Ensure that the communications port select is the same as that in Device Manager.

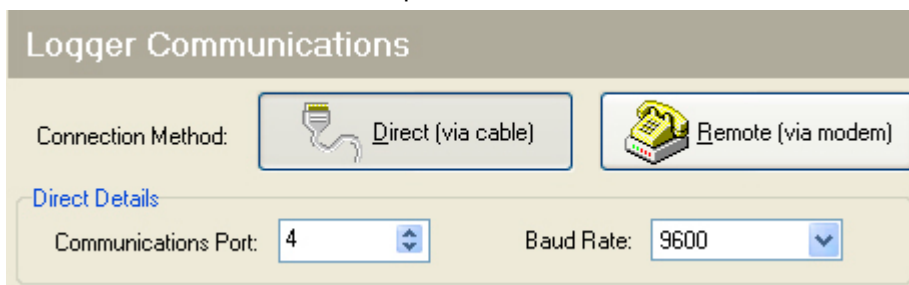


Fig. 15. Make sure the Communications Port selected in your software is the same as the port assigned in Device Manager.