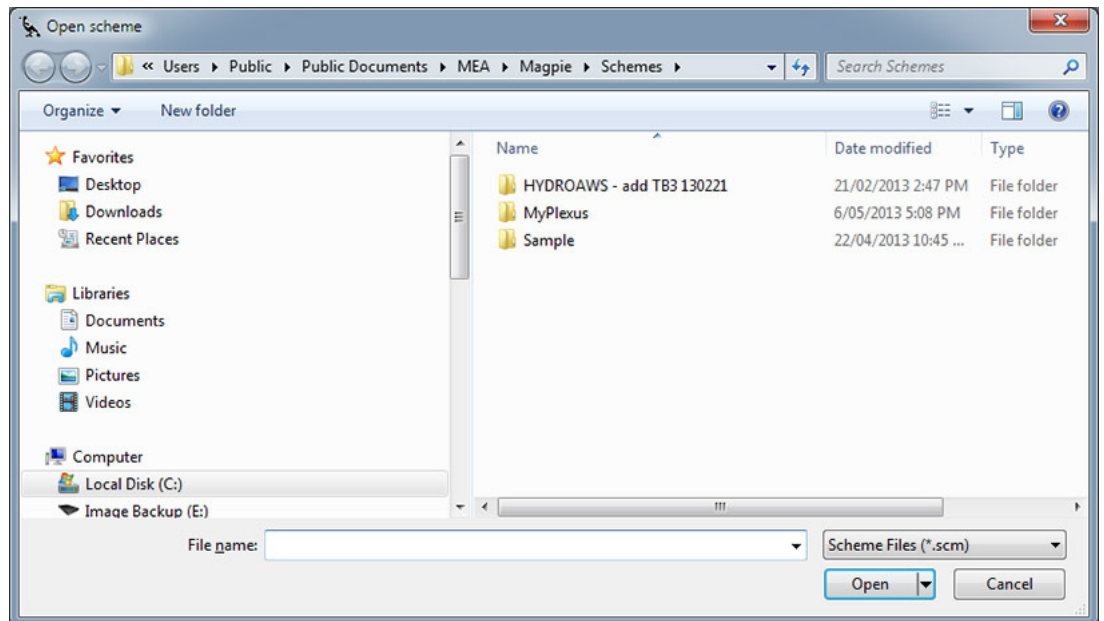


# Magpie Migration

## How to Move Historical Magpie Data to a New Computer

### At Your Old Computer

1. Open Magpie software.
2. From the **File** menu choose **Open Scheme**.
3. Any scheme folders stored on your computer will be visible in the window that opens.
4. Copy the scheme folders from this window to a USB memory stick or other storage device by selecting them and dragging them across.



### At Your New Computer

1. Install Magpie on your new computer, and open it.
2. From the **File** menu choose **Open Scheme**.
3. Copy your scheme folders from your storage device by dragging them from the device into the **Open Scheme** window.

That's it. You now have access to your scheme(s) and your existing database.

